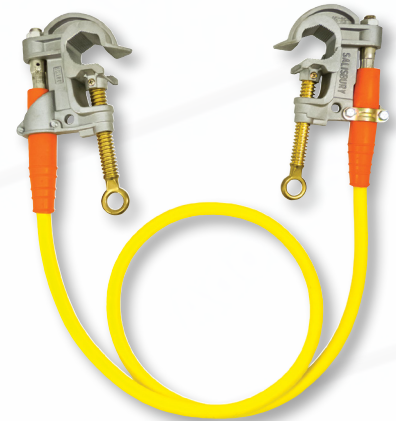


BRINGING WORKERS HOME SAFELY SINCE 1936



Custom Grounds and Jumpers Delivered with Uncustomary Quickness

Lineman and utility workers' jobs won't wait, so neither should they when it comes to getting the safety equipment they need. Grounds and jumpers are vital when working on powerlines or electrical systems, and the **Saf-T-Gard® Voltgard® Electrical Safety Division** now proudly offers custom assembly of personal protective grounds and temporary bypass jumpers within **industry-leading delivery times**. All custom sets are designed to unique specifications and tested to ASTM and OSHA standards. Whether it is single grounding assemblies, grounding cluster sets, or hand- or stick-installed jumpers, Voltgard® can build any configuration to fit every application.



CUSTOM ASSEMBLY, TESTING & REPAIR

ALL TO OSHA & ASTM STANDARDS!

CONTACT
SAF-T-GARD AT
1-800-548-GARD (4273)
TO ORDER

TYPICALLY
SHIPS IN
3-4 DAYS*

**If desired components
are in stock.*

Assembly

- Assembled sets to the custom length, including clamps and ferrules to match your specific needs.
- Fast turnaround on most assemblies for quick shipment.

Testing

- Ability to fully test ground sets to confirm continuity and performance of the set as intended for use.
- While no standard exists to specify how often grounds need to be retested, the recommended industry practice is **every 12 months** or earlier if damage to the set is suspected.

Repair and Recertification

- Grounds and jumpers can oftentimes be repaired for repeated use and cost savings over the price of purchasing new sets.
- **The Saf-T-Gard® Voltgard® Electrical Safety Division** has full ability to inspect, repair and recertify grounds and jumpers to like-new status!

Ground Set Checklist:

1. Specify the clamps.

Clamps are available in multiple types and sizes like c-clamps, duckbill clamps, substation bus clamps, flat face clamps, ball-stud clamps and grounding elbows depending upon what you are grounding to. We offer many variations to fit any application you may have. Be sure that the clamp will meet or exceed the maximum amperage rating of the ground cable that it will be used with per the ASTM F855 standard.



2. Specify the cable.

Once the short circuit capacity of the system has been determined, choose the appropriate cable size. Specify the cable length and the color of the jacket desired.

Cables are available in yellow, black and clear in these sizes: • #2 • 1/0 • 2/0 • 4/0



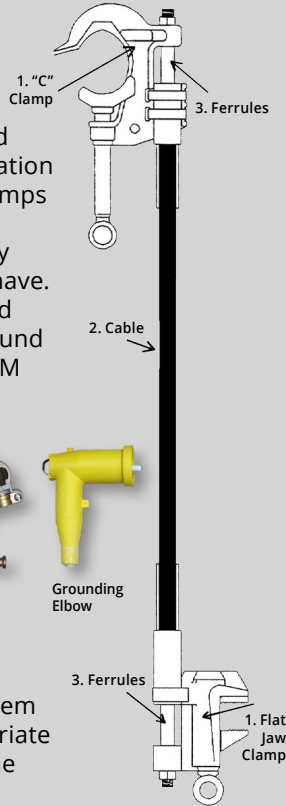
3. Specify the ferrules.

Threaded and pin type/plain ferrules are available in both aluminum and copper, as well as shrouded and unshrouded configurations. The size of the ferrule will need to match the cable size with which it will be used.



4. Specify the options.

List any optional equipment that is desired. This can include hanger studs, contact studs, heat shrink tubing, markings, clear strain relief, etc.



Insulated Jumper Checklist:

1. Specify the style of insulated clamps.

All hand installed jumper clamps are available in two sizes - 477 MCM (.9" - .162") or 954 MCM (1.25" - .162") and various materials (hard plastic, clear plastic, molded rubber) to meet your specific application needs.



2. Specify the size and length of insulated cable.

Cable options available are 15 kV (#2, 1/0, 2/0 & 4/0), 25 kV (1/0 & 2/0) and 35 kV (1/0 & 2/0). Custom lengths are available to meet whatever requirements you may have.



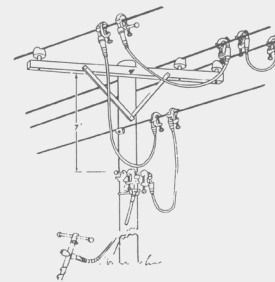
3. Specify the size and style of ferrules required.

The size of the ferrule will be determined by the size of the cable. Specify the appropriate ferrule catalog number for either shrouded or unshrouded ferrules. Both types are sold in pairs. Both shrouded and unshrouded ferrules are available.



4. Specify any special requirements.

This could include heat shrink tubing, special assembly instructions, markings, packaging etc.



CUSTOM ASSEMBLY OF ANY COMBINATION OF COMPONENTS FROM ANY MANUFACTURER!

CONTACT SAF-T-GARD AT 1-800-548-GARD (4273) TO ORDER