

First Aid Readiness Guide

A proactive approach to safety ensures everyone makes it home safe.

**Emergency
Response Bag**
91170



This guide equips customers with the knowledge and tools needed to build a strong workplace first aid and emergency response program.

Understanding Job Site Risk & Legal Requirements

Occupational Safety Highlights



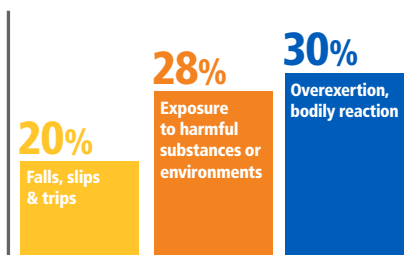
Medically Consulted Injuries

4.3 Million

Annual Cost

167.0 Billion

Top Leading Causes of Work-Related Injuries



Which account for more than 75% of all non-fatal injuries and illnesses involving days away from work*

(Source: NSC Injury Facts, 2023)

Typical Job Site Risks

- **Minor Injuries:** Cuts, scrapes, and bruises - common on construction sites - may seem trivial but can lead to complications without proper care.
- **Major Injuries/Emergencies:** Falls, burns, and severe lacerations require immediate and trained responses to prevent fatalities.

Why preparedness is necessary

1. **Reduce Risks:** Proactive measures minimize preventable injuries.
2. **Awareness & Education:** Empower employees to recognize hazards and respond appropriately.
3. **Compliance:** Meet OSHA and ANSI standards to avoid legal repercussions.
4. **Cost Mitigation:** Injury-related costs average thousands per incident, not to mention lost time and reduced productivity.



Compliance and why it matters

At work, injuries can happen anytime, from cuts and scrapes to more serious accidents. That's why having the right first aid supplies on hand is critical. OSHA (Occupational Safety and Health Administration) and ANSI (American National Standards Institute) set clear rules and guidelines to make sure your job site is prepared.

ANSI Compliance

ANSI ensures that first aid kits meet strict standards for workplace safety. OSHA references ANSI in its guidelines because ANSI defines what a first aid kit should include to handle common injuries and emergencies. The ANSI/ISEA Z308.1-2021 standard outlines the minimum supplies needed for kits, from bandages to burn treatments, to make sure workers get the right care fast.

OSHA Compliance

OSHA's regulations, found in section 29 CFR 1910.151, require employers to provide medical services and first aid for sick or injured workers. While OSHA doesn't specifically list what should go into a first aid kit, it does require that supplies be readily available at any job site or work location. This means you need to have kits stocked and within easy reach, especially in high-risk environments like construction.

Why This Matters

These rules exist to protect you and your team. Accidents happen, but with OSHA- and ANSI-compliant first aid kits, you can handle injuries quickly, minimizing the impact and keeping the job moving. Following these regulations isn't just about checking boxes—it's about ensuring everyone goes home safe at the end of the day.

Building Your Workplace First Aid Program



FIRST AID + EMERGENCY CENTER



1

First Aid



Emergency Response



5

Eyewash



2

BBP



3

Burn Kit



4

Bleeding Control



6

AED



7



1. First Aid Kits & Cabinets

OSHA/ANSI-Compliant Kits for 10 to 200 People.

Durable plastic or metal cases, available in bulk or unitized formats. Designed to treat minor to serious injuries - ideal for safety-conscious teams in any industry.

5. Emergency Response Kits

When help can't wait, these kits deliver immediate support.

OSHA/ANSI-compliant, built for high-risk zones with grab-and-go convenience. The top-selling 91170 kit includes 6 treatment packs - Burns, Wounds, Bleeding, Eye Injury, BBP, CPR, and Sprains - ensuring quick access to essential supplies.

2. Eyewash Stations

Emergency Eyewash Stations.

Wall-mounted units provide immediate eye flushing after chemical exposure - essential for first response in environments with eye hazards.

6. Bleeding Control Kits

Quick access to life-saving tools when seconds matter most.

Designed to stop severe bleeding fast in schools, public spaces, or job sites. Includes limb (tourniquet), chest (seal), and torso (hemostatic gauze) options to meet diverse emergency needs.

3. Bloodborne Pathogen (BBP) Kits

Critical for maintaining safety in public settings.

Protect your team from biohazard exposure with OSHA-compliant BBP kits. Includes cleanup tools for safe and effective spill response.

7. ZOLL AEDs - **NEW!**

A trusted brand delivering fast, confident response during cardiac events.

Now available from First Aid Only - ZOLL AEDs feature real-time CPR coaching, smart heart analysis, and user-friendly design. Ideal for offices, warehouses, and public areas.

4. Burn Care Kits

Essential protection for kitchens, factories, and hot work zones.

Designed for quick, effective workplace burn treatment. Includes burn dressings, gloves, shears, and sterile bandages - an essential addition to any first aid station.

Product Offerings

First Aid Kits & Cabinets

- 91322** 10P Bulk First Aid Kit, Plastic, ANSI A
- 91349** 25P Unitized First Aid Kit, Plastic, ANSI A
- 91347** 50P Bulk First Aid Kit, Metal ANSI B
- 91537** SmartCompliance Mobile, 25P First Aid Kit, ANSI A
- 91377** SmartCompliance Large Cabinet, 100P ANSI B
- 5250** Heat Stress Kit, Plastic
- 91568** Opioid Overdose Kit with Naloxone Nasal Spray



91322



91377

Emergency Response & Bleeding Control

- 91621** Bleeding Control Kit for Cuts & Lacerations
- 91136** Bleeding Control Kit for Limb & Torso Wounds
- 91170** Emergency Response Bag with Modules
- 91554** First Aid & Bleeding Control First Aid Kit



91170



91554

Eyewash

- 24-300** Eyewash Station, Double 32oz Bottles
- 91552** Mobile Eyewash Station



91552



24-300

BBP & Burn Kits

- 214-U/FAO** Bloodborne Pathogen & Bodily Fluid Clean Up Kit
- 440-O/FAO** Burn Care Kit



214-U/FAO



440-O/FAO

ZOLL AED's - NEW!

- 91687** ZOLL AED Plus®
- 91697** Powerheart® G5
- 91682** ZOLL AED 3®

NEW!
ZOLL



91687



91697



91682

First Aid/Emergency Response Checklist

Emergency Planning & Communication

OSHA expects employers to:

- Develop an Emergency Action Plan (EAP) under 29 CFR 1910.38
- Include first aid and medical emergency procedures
- Train employees on reporting injuries, locations of kits, emergency contact procedures, etc.

| WORKPLACE CHECKLIST | | | |
|------------------------------------|--|------------------------|--|
| AED | | Heat Stress Kit | |
| Bloodborne Pathogen Kit | | Lens Wipes | |
| Bleeding Control Kit | | Outdoor First Aid | |
| Designated Safety Station | | Portable First Aid | |
| Emergency Eyewash | | SDS Binder & Documents | |
| Emergency Response Bag | | Vehicle First Aid Kit | |
| Evacuation & Shelter-in-Place Plan | | | |
| First Aid Wall Cabinet | | | |
| First Aid & Safety Signage | | | |

WE OFFER FIRST AID TRAINING!

Turn equipment into confident action with expert-led instruction.

First Aid Only now provides turnkey first aid training services. With both remote and on-site classes you can ensure you are offering our customers solutions to be prepared for any emergency.



On-Site Training

| Course | Course ID | Class size max | Class Duration |
|---------------------------------|-----------|----------------|----------------|
| AED/CPR | T-AC | 12 | 2.5 - 3 hr |
| Basic First Aid | T-F | 12 | 3-4 hr |
| AED/CPR, First Aid | T-ACF | 12 | 5-7 hr |
| AED/CPR, First Aid, BBP | T-ACFB | 12 | 6-8 hr |
| Active Shooter/Bleeding Control | T-S-BC | 12 | 2.5 hr |

Online Training with remote skills verification

| Course | Course ID |
|--------------------|-----------|
| AED/CPR | R-AC |
| AED/CPR, First Aid | R-ACF |



Additional product lines within the Acme family



Complete Spill Clean Up

Spill Magic keeps facilities front and back end safe reducing slip, trip, and fall accidents for employees and customers.



ELITE FIRST AID



Tactical & Trauma

Elite First Aid offers advanced kits that deliver without hesitation. Designed for rapid response and built to withstand tough conditions.



Private Label Wipes

Wide range of wipes, towelettes and prep pads providing skin cleansing and sanitizing. Available in private label, OEM and national brand.

First Aid Only Kits Can Be Personalized OR Customized.

✓ Easy Personalization with your logo on the front

Add a logo & contact info to the front of your company's personalized first aid kit. Labeling and silkscreening are available. Both are durable, sun and weather resistant.

✓ Complete Customization with customized kit contents; and branding front and back

You can add a logo, contact info or unique art to the front and back of your customized first aid kit. Need More? Take it a step further by customizing the contents of your first aid kits to fit individual needs and requirements.



This guide acts as a trusted partner, offering comprehensive resources to address workplace safety and first aid needs.